

## Learning Outcomes

Candidates will be:-

- *Aware of the importance of safe working practice.*
- *Aware of their company's fire and evacuation policy*
- *Aware of the importance of fire risk assessments and their responsibility in complying with them*
- *Aware of the causes of fire and ways to prevent them.*
- *Able to use available fire fighting equipment correctly*
- *Aware of the safety signs & symbols in their workplace*
- *Capable of recognising hazards in the workplace & their responsibility for reporting.*

*The course is conducted at your premises and can accommodate a maximum of 15 candidates.*

*Course duration — 2 hours*



Bradford City FC during the blaze

Fully compliant with:

The Regulatory Reform (Fire Safety)  
Order 2005

---

### Ashtree Management Services Ltd

Registered Office: 13 Ruskin Close  
Stowmarket  
Suffolk  
IP14 1TY

Freephone: 0800 9700 132  
Fax: 08715 227747  
Email: [sales@ashtree.co.uk](mailto:sales@ashtree.co.uk)



## Fire Safety in the Workplace



Ashtree Management Services Ltd



*Effective & Enjoyable Training*

**0800 9700 132**

# Fire Safety in the Workplace

*Would you or your staff know what to do if a fire broke out in the workplace? Every year, people die and many more are injured in fires at work. The financial costs can be as equally devastating.*

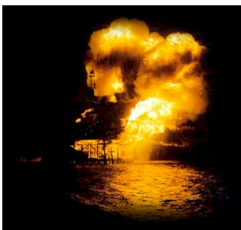
*Annually the cost to business through fire runs to millions of pounds - some companies never recover. So it makes good sense to Protect yourself, your staff and your business from fire.*



*This course has been designed to reinforce workplace policies and practices in fire prevention and evacuation procedures.*

*Delegates will be made aware of their responsibilities under health & safety legislation together with practical information on basic fire fighting.*

*Hands-on experience is gained through the use of fire extinguishers and general workplace scenarios enable employees dramatically reduce the risk of injury or damage to premises.*



**Piper Alpha Fire Disaster**

## Course Content

- Relevant Legislation
- Dangers from fire
  - Types of injury caused by fire
  - Electrical fires
  - Burns, smoke inhalation
- Combustion, the Fire Triangle and breaking the chain
- Employees responsibilities
  - To themselves and others
  - Housekeeping
  - Hazard reporting and safe use of equipment
- Fire fighting equipment
  - An explanation on the use of extinguishers, water and carbon dioxide.
  - Fire blankets
  - Sprinklers
- Workplace specific training
  - Procedures if you discover a fire
  - Procedure on hearing the fire alarm
  - Fire alarm system
  - Tackling a fire
  - Evacuation procedures
  - Sources of ignition
  - Scenarios of fictitious events to discuss
- Hazardous materials (CoSHH)
  - Storage and use of Hazardous materials

## Group Work:

Delegates to go round the workplace and list

- Combustible materials
- Sources of ignition

Discuss and feedback

## Course Structure

Course duration is 2 hours and includes the types of fire & which extinguisher to use. Maximum group size is 15 delegates. Attendance certificates will be issued to all delegates



**Bradford City, hundreds of people in hospital with burns, 52 people died**

## Ashtree Management Services Ltd

Registered Office: 13 Ruskin Close  
Stowmarket  
Suffolk  
IP14 1TY

Freephone: 0800 9700 132  
Fax: 08715 227747  
Email: sales@ashtree.co.uk